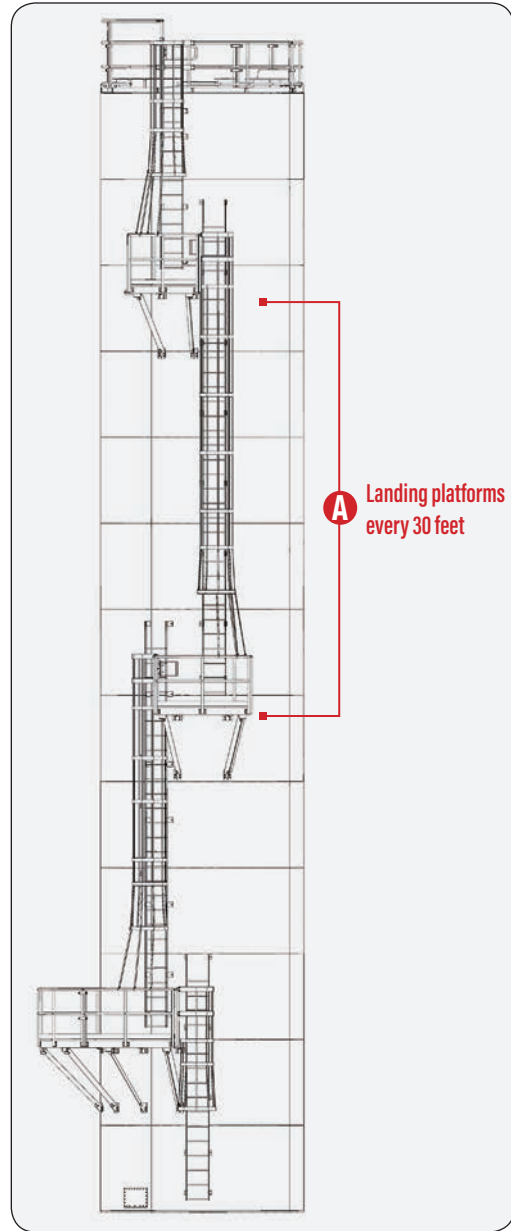
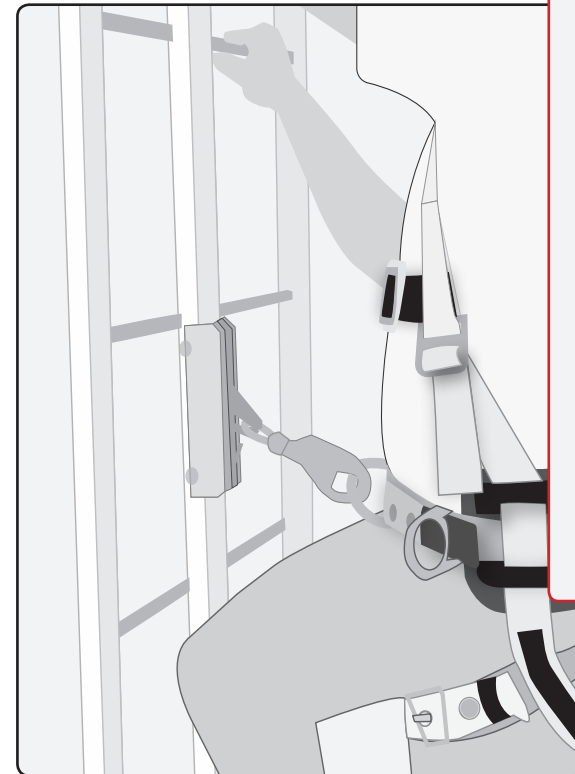
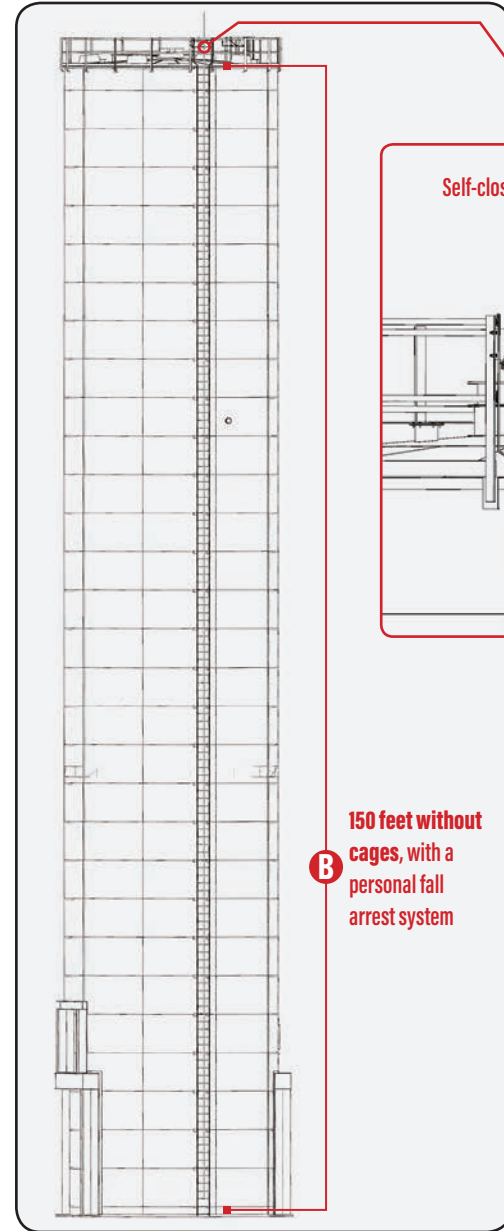


BEFORE 2018



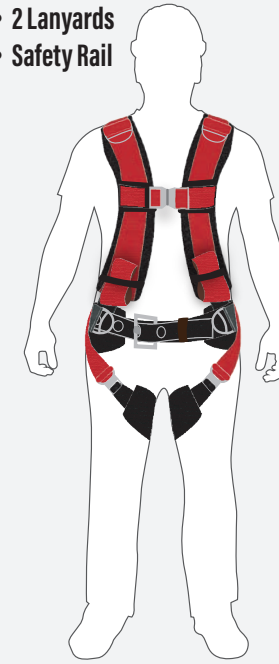
AFTER 2018 & BEYOND



Tank Connection Implementation Date: Summer 2018

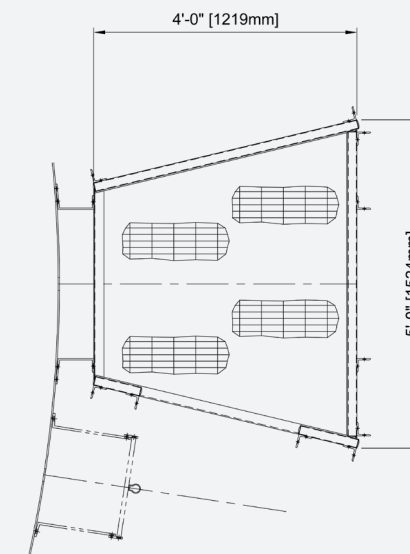
PERSONAL FALL ARREST SYSTEM INCLUDES:

- 1 Harness
- 2 Lanyards
- Safety Rail

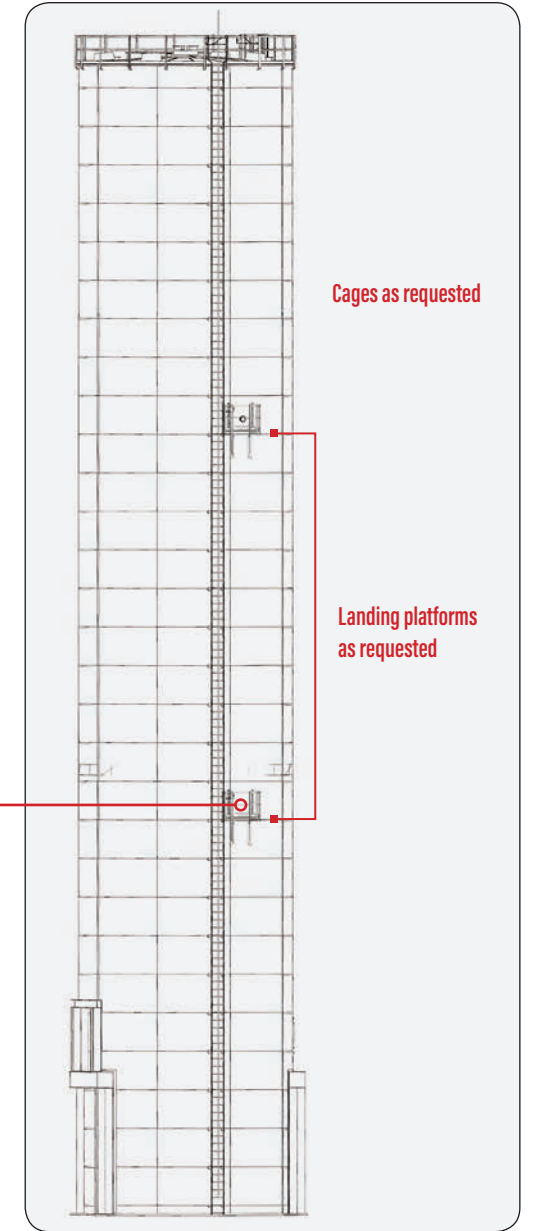


LANDING PLATFORM DIMENSIONS:

4 ft (1219 mm) x 5 ft (1524 mm)



ADDITIONAL OPTIONS



OSHA FALL PROTECTION REQUIREMENTS 2016

1910.27(d)(1)

- A** Cages or wells shall be provided on ladders of more than 20' to a maximum unbroken length of 30'.

OSHA FALL PROTECTION REQUIREMENTS 2018

1910.28(b)(9)

Fixed ladders may extend 24' without cages, wells or personal fall arrest systems.

- B** Ladders with a personal fall arrest system may extend 150' without a landing platform and cage.

- B** Ladders installed after November 19, 2018 that are over 24' are required to have a personal fall arrest system.

- C** All ladders will require self-closing gates at access points.

OSHA FALL PROTECTION REQUIREMENTS 2036

1910.28(b)(9)

- D** Existing fixed ladders installed before November 19, 2018 will be equipped with a personal fall arrest system, ladder safety system, cage or well.

Tank Connection
 3609 North 16th Street
 Parsons, KS 67357
 620-423-3010
 sales@tankconnection.com
 www.tankconnection.com